



Rothschild Road, London, W4  
Guide Price £1,300,000

**WHITMAN & CO.**

SALES · LETTINGS · COMMERCIAL





A light and spacious four-bedroom Victorian home, ideally situated in a sought-after residential area, benefiting from a south-facing garden and a separate studio.

The property offers a generous master bedroom with en suite bathroom, three further bedrooms, a family bathroom, and a guest cloakroom. The ground floor features a bright 26' through reception room and a well-proportioned 19' kitchen/breakfast room.

Conveniently located within close proximity to tube, rail, and bus links, as well as the wide selection of shops, bars, and restaurants along Chiswick High Road.





# Rothschild Road, W4

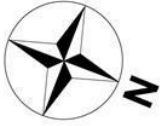
Approximate Gross Internal Area

150.37 sq m / 1618 sq ft

(Including Eaves Storage & Store / Office)

Eaves Storage : 4.91 sq m / 53 sq ft

Store / Office : 10.25 sq m / 110 sq ft

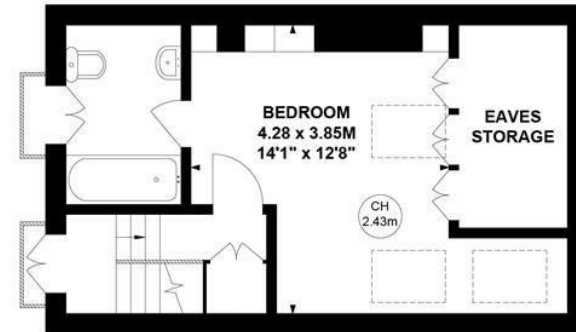


Key :

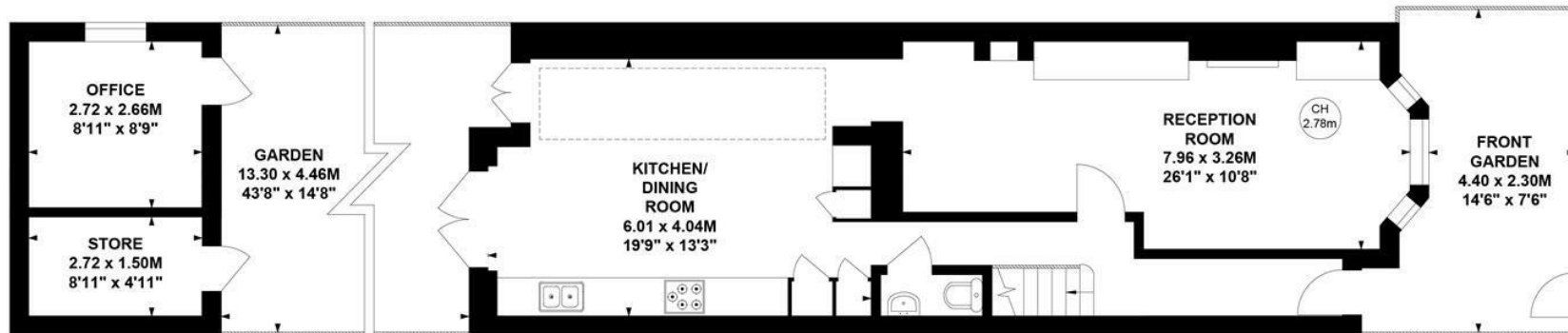
CH - Ceiling Height



First Floor



Second Floor



Ground Floor

Not to scale, for guidance only and must not be relied upon as a statement of fact.

All measurements and areas are approximate only

- Sought after residential area
- South-facing garden
- Garden studio

- Four bedrooms
- 26' through reception room
- Fantastic transport links

Tenure - Freehold  
Local Authority - Ealing  
Council Tax - Band F



